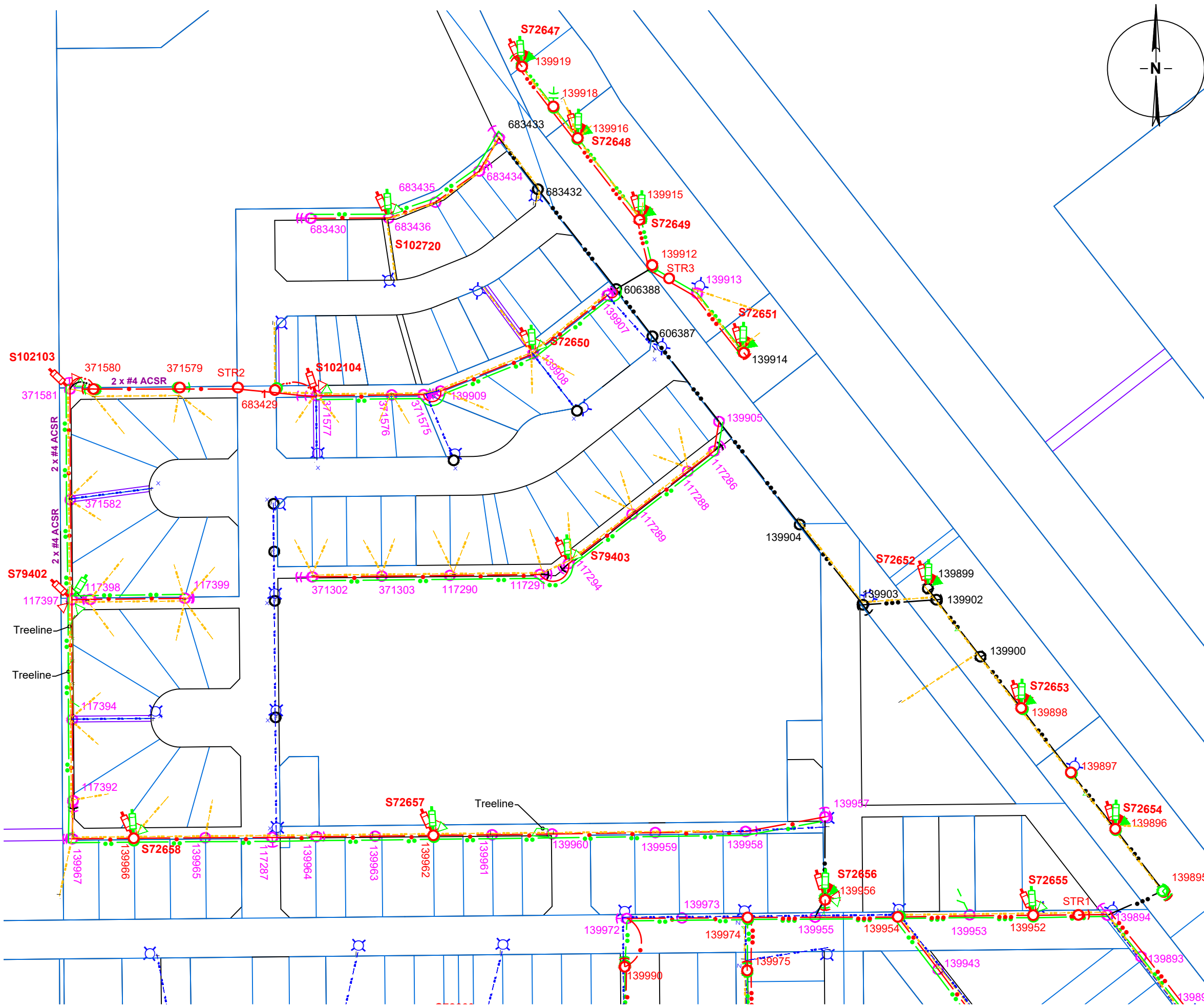


THIS DRAWING IS THE PROPERTY OF ATCO ELECTRIC LTD. AND CONTAINS PROPRIETARY AND CONFIDENTIAL INFORMATION WHICH MUST NOT BE DUPLICATED, USED OR DISCLOSED OTHER THAN AS EXPRESSLY AUTHORIZED BY ATCO ELECTRIC LTD.



NOTES:
 1. DISTANCES ARE IN METERS AND DECIMALS THEREOF.
 2. RED - NEW
 MAGENTA - MODIFY
 CYAN - REPLACE OR RE-CONDUCTOR
 BLACK - EXISTING
 GREEN - SALVAGE

LEGEND:

POWER POLE	RISER POLE	ANCHOR
TRANSFORMER: O/H 1PH	O/H 3PH	PADMOUNT
O/H 1 PHASE	O/H 3 PHASE	
O/H 1PH. W/ NEUTRAL	O/H 3PH. W/ NEUTRAL	
U/G 1 PHASE	U/G 3 PHASE	
LUMINAIRE	PEDESTAL	PRIMARY METER: O/H (PM) U/G (PM)
REGULATOR	SWITCH CUBE	PULL BOX
FUSED SWITCH	GANG SWITCH	FAULT INDICATOR
SOLID BLADE SWITCH	CIRCUIT RECLOSERS	

ENGINEERING APPROVAL

DO NOT BUILD

REQUIRES ENGINEERING PERMIT

DO NOT BUILD

REQUIRES ENGINEERING PERMIT

DESIGN CONTACT

Lawrence Espela
 (403) 831-7748
 lawrence.espela@atco.com

REV	DATE	DESCRIPTION	BY
A	04/25/2024	ISSUE FOR INFORMATION	LE

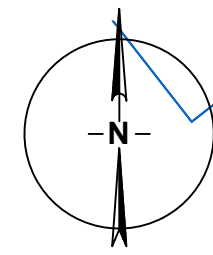
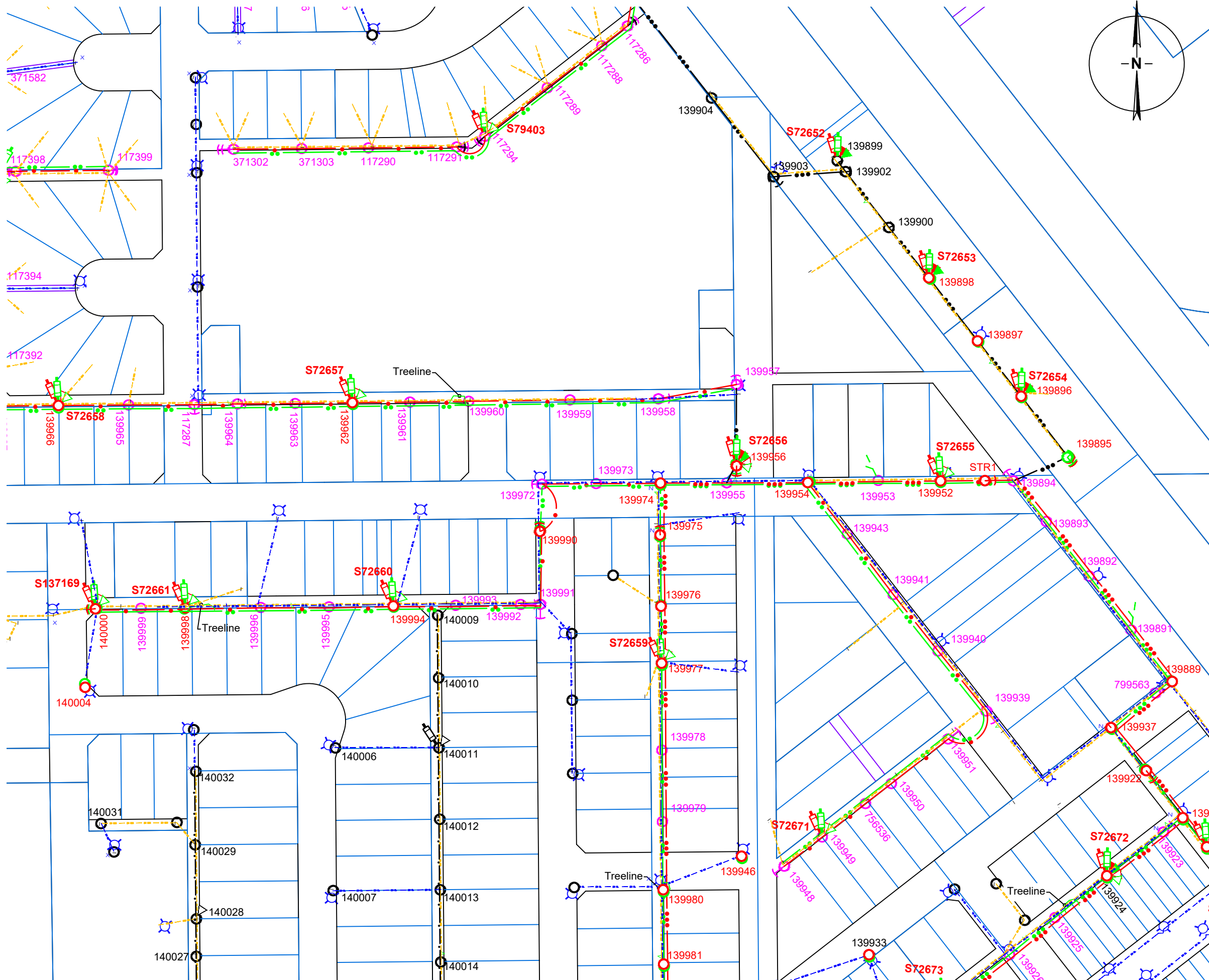
ATCO

PROJECT NO.: 1089727 LOCATION: Lloydminster

DRAWING TITLE:
Marwayne Town Conversion

DRAWN BY:	PL	DATE:	04/19/2024
CHECKED BY:	TR	SCALE:	1:2000
DWG #: 1089727-300-01			

THIS DRAWING IS THE PROPERTY OF ATCO ELECTRIC LTD. AND CONTAINS PROPRIETARY AND CONFIDENTIAL INFORMATION WHICH MUST NOT BE DUPLICATED, USED OR DISCLOSED OTHER THAN AS EXPRESSLY AUTHORIZED BY ATCO ELECTRIC LTD.



NOTES:
 1. DISTANCES ARE IN METERS AND DECIMALS THEREOF.
 2. RED - NEW
 MAGENTA - MODIFY
 CYAN - REPLACE OR RE-CONDUCTOR
 BLACK - EXISTING
 GREEN - SALVAGE

LEGEND:

POWER POLE	RISER POLE	ANCHOR
TRANSFORMER: O/H 1PH	O/H 3PH	PADMOUNT
O/H 1 PHASE	O/H 3 PHASE	
O/H 1PH. W/ NEUTRAL	O/H 3PH. W/ NEUTRAL	
U/G 1 PHASE	U/G 3 PHASE	
LUMINAIRE	PEDESTAL	PRIMARY METER: O/H (PM) U/G (PM)
REGULATOR	SWITCH CUBE	PULL BOX
FUSED SWITCH	GANG SWITCH	FAULT INDICATOR
SOLID BLADE SWITCH	CIRCUIT RECLOSERS	

ENGINEERING APPROVAL

DO NOT BUILD

REQUIRES ENGINEERING PERMIT

DO NOT BUILD

REQUIRES ENGINEERING PERMIT

DESIGN CONTACT

Lawrence Espela
 (403) 831-7748
 lawrence.espela@atco.com

REV	DATE	DESCRIPTION	BY
A	04/25/2024	ISSUE FOR INFORMATION	LE

ATCO

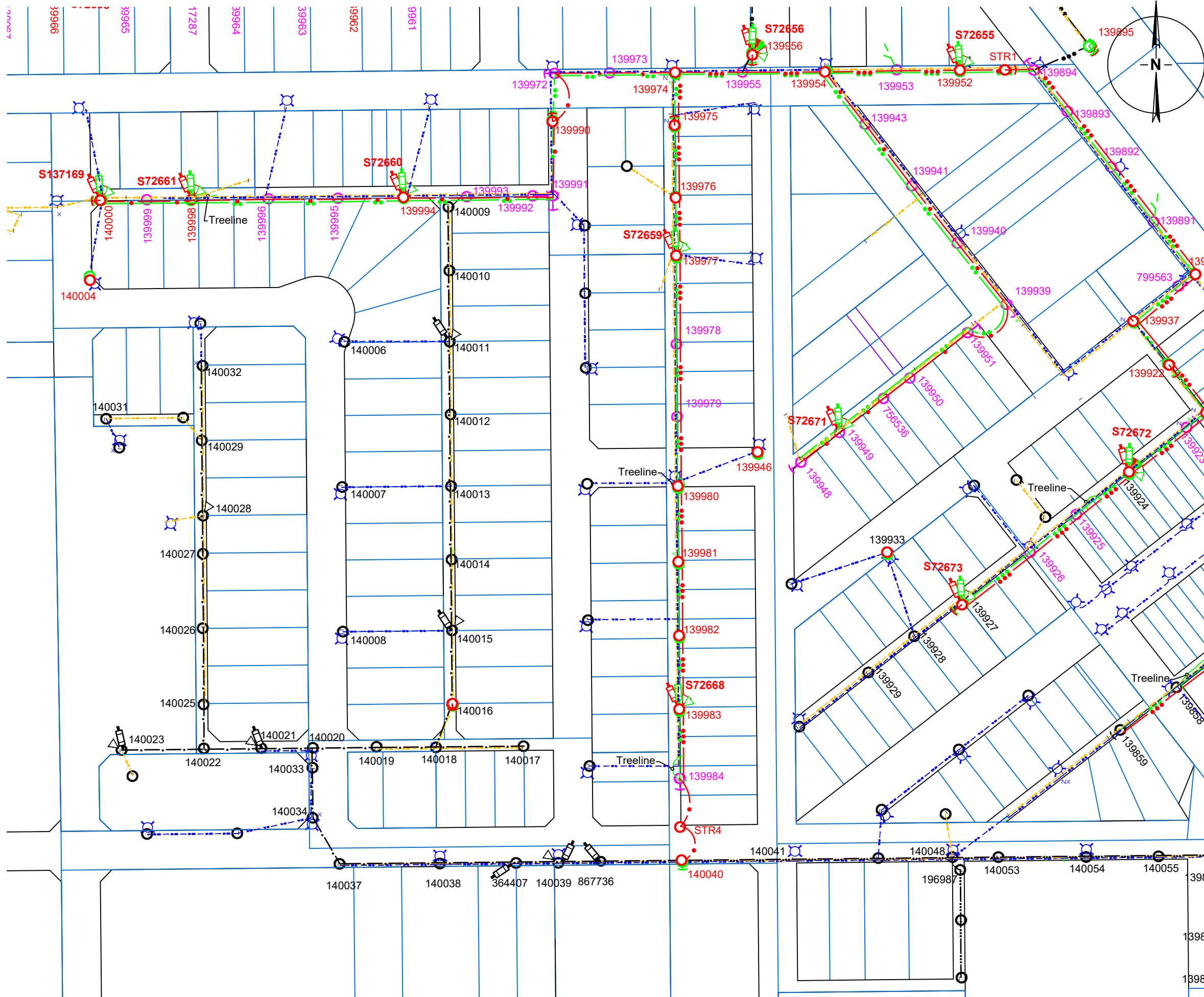
PROJECT NO.: 1089727 | LOCATION: Lloydminster

DRAWING TITLE:
Marwayne Town Conversion

DRAWN BY:	PL	DATE:	04/19/2024
CHECKED BY:	TR	SCALE:	1:2000

DWG #: 1089727-300-02

THIS DRAWING IS THE PROPERTY OF ATCO ELECTRIC LTD. AND CONTAINS PROPRIETARY AND CONFIDENTIAL INFORMATION WHICH MUST NOT BE DUPLICATED, USED OR DISCLOSED OTHER THAN AS EXPRESSLY AUTHORIZED BY ATCO ELECTRIC LTD.



NOTES:
1. DISTANCES ARE IN METERS AND DECIMALS THEREOF.

2. RED - NEW
MAGENTA - MODIFY
CYAN - REPLACE OR RE-CONDUCTOR

BLACK - EXISTING
GREEN - SALVAGE

LEGEND:

POWER POLE	RISER POLE	ANCHOR	
TRANSFORMER: O/H 1PH	O/H 3PH	PADMOUNT	
O/H 1 PHASE	O/H 3 PHASE		
O/H 1PH. W/ NEUTRAL	O/H 3PH. W/ NEUTRAL		
U/G 1 PHASE	U/G 3 PHASE		
LUMINAIRE	PEDESTAL	PRIMARY METER: O/H (PM) U/G (PM)	
REGULATOR	SWITCH CUBE	PULL BOX	OMNI BALL
FUSED SWITCH	GANG SWITCH	FAULT INDICATOR	
SOLID BLADE SWITCH	CIRCUIT RE ClosERS		

ENGINEERING APPROVAL

DO NOT BUILD

REQUIRES ENGINEERING PERMIT

DO NOT BUILD

REQUIRES ENGINEERING PERMIT

DESIGN CONTACT

Lawrence Espela
(403) 831-7748
lawrence.espela@atco.com

A	04/25/2024	ISSUE FOR INFORMATION	LE
REV	DATE	DESCRIPTION	BY

ATCO

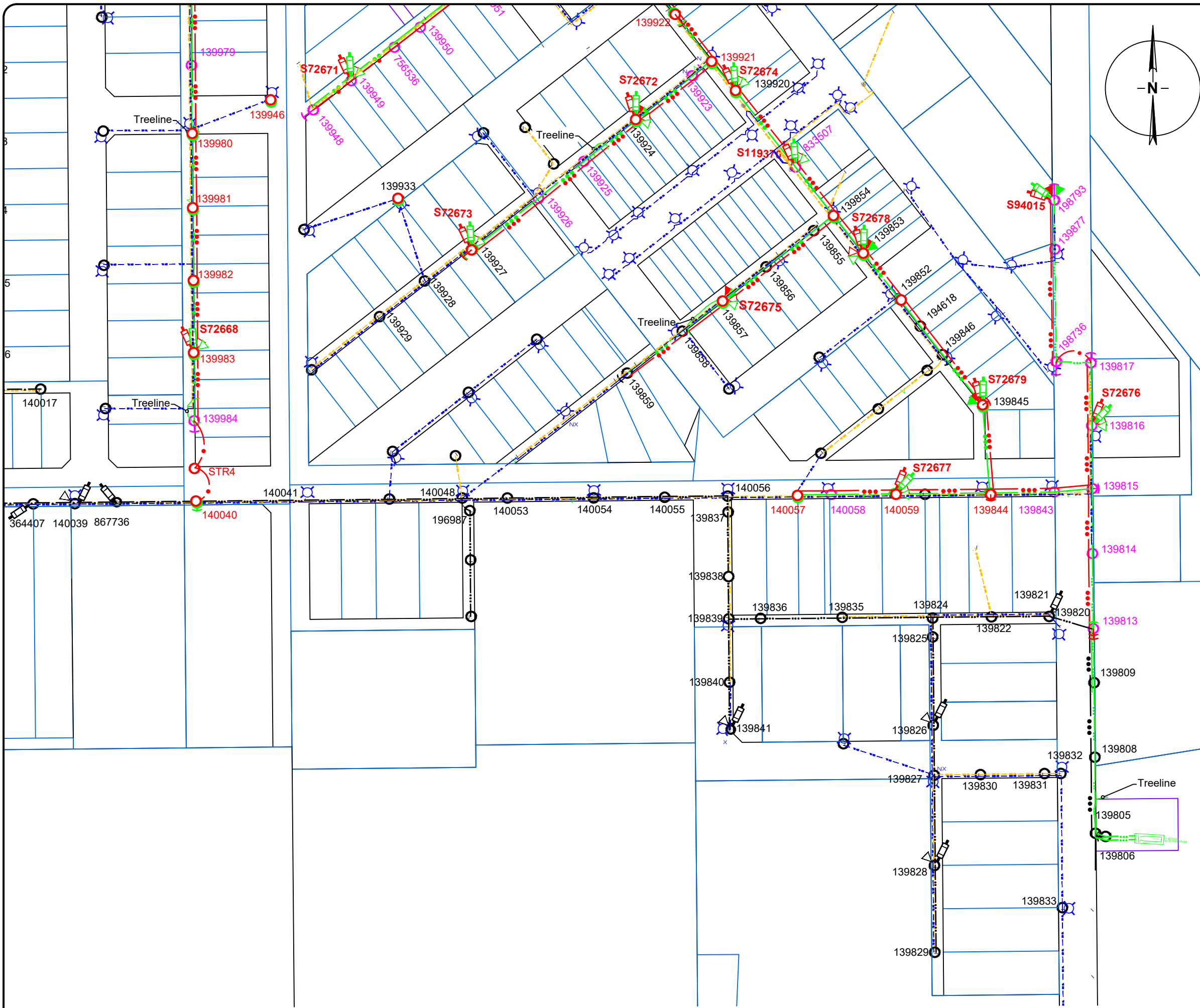
PROJECT NO.: 1089727 | LOCATION: Lloydminster

DRAWING TITLE:
Marwayne Town Conversion

DRAWN BY:	PL	DATE:	04/19/2024
CHECKED BY:	TR	SCALE:	1:2000

DWG #: 1089727-300-03

THIS DRAWING IS THE PROPERTY OF ATCO ELECTRIC LTD. AND CONTAINS PROPRIETARY AND CONFIDENTIAL INFORMATION WHICH MUST NOT BE DUPLICATED, USED OR DISCLOSED OTHER THAN AS EXPRESSLY AUTHORIZED BY ATCO ELECTRIC LTD.



LEGEND:

POWER POLE	RISER POLE	ANCHOR
TRANSFORMER: O/H 1PH	O/H 3PH	PADMOUNT
O/H 1 PHASE	O/H 3 PHASE	
O/H 1PH. W/ NEUTRAL	O/H 3PH. W/ NEUTRAL	
U/G 1 PHASE	U/G 3 PHASE	
LUMINAIRE	PEDESTAL	PRIMARY METER: O/H (PM) U/G (PM)
REGULATOR (REG)	SWITCH CUBE (SC)	PULL BOX (PB) OMNI BALL (OB)
FUSED SWITCH (FS)	GANG SWITCH (GS)	FAULT INDICATOR (FI)
SOLID BLADE SWITCH (SBS)	CIRCUIT RECLOSERS (CR)	

ENGINEERING APPROVAL

DO NOT BUILD

REQUIRES ENGINEERING PERMIT

DO NOT BUILD

REQUIRES ENGINEERING PERMIT

DESIGN CONTACT

Lawrence Espela
 (403) 831-7748
 lawrence.espela@atco.com

REV	DATE	DESCRIPTION	BY
A	04/25/2024	ISSUE FOR INFORMATION	LE

ATCO

PROJECT NO.: 1089727 | LOCATION: Lloydminster

DRAWING TITLE:
Marwayne Town Conversion

DRAWN BY:	PL	DATE:	04/19/2024
CHECKED BY:	TR	SCALE:	1:2000

DWG #: 1089727-300-04